



REHASENSE

more than mobility

BROADBAND Wheelchair Ramps

User's manual



CE

1. General information

Dear customer,

This user manual contains a description of the medical device and important guidelines to ensure a correct and safe usage of the product. It is important prior to use to read this manual carefully. It is especially important to read the safety requirements and follow these.

Rehasense continuously develops its products and so reserves the right to change the specifications and functions of products without notice.

2 Indications & Intended Usage

Ramps are medical devices intended to be used only to assist patients in wheelchairs or scooters. They enable the passage of elevated points (e.g. stairs or curbs) with or without the assistance of a helper. Ramps thereby enable patients, sitting in a wheelchair because of invalidity, to enter or leave buildings or cars, buses etc. The ramps can be used inside as well outside. Any other use is prohibited

For any other questions, please take contact your dealer or manufacturer directly. The contact information is located on the last page of this Manual.

3 Safety Information

Make sure that this user's manual is read by all persons who use the device. The manufacturer doesn't take any responsibility for damages and/or injuries, caused by the fact that the user's manual has not been followed.



Limitations for usage

- Only use the product in flawless condition.
- If defects or errors are detected you must immediately contact your dealer.
- Be aware of the information on the product label.
- Make sure that this user manual is read by all persons using the ramp. Damages caused by the fact that the user manual has not been followed, will not be accepted
- Ramps must not be loaded with more than the max load described in Technical Data and on the label.
- Each ramp type can be used at maximum inclination indicated in the technical data on page 3. Do not exceed indicated values.
- Only use the ramp for the purpose it is intended for.
- Avoid making any modifications to the ramp unless you have the producers written permission.
- When unfolding the ramp the user must take care not to squeeze fingers or other body parts.
- The ramp must only be used on a stable surface.



Be careful when you see this symbol on the device. Fingers or other body parts of a user or/and assistant can be trapped between elements of the device during folding, unfolding or adjusting. Be extremely careful when adjusting the device's characteristics .
Observe the dimensions of gaps between device's elements to avoid trapping your fingers or other body parts

4 Delivery & product general description

The Ramp is made from aluminium honeycomb profiles. It is corrosion resistant. Broadband-Ramp sets consist of separate foldable tracks. The surface is covered with special anti-slipping material.

Initial Check

Ramps are supplied in cartons, folded - for easier transportation. The contents are:

- 1 folding ramp or 2 folding ramp halves
- 1 user's manual

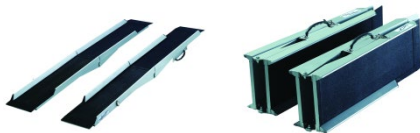
In the first place take the device out of the box and check with the list to see there is anything missing. If you'd discover at this stage that some part is missing or damaged, do not continue assembly process. Contact the dealer of your product right away.

Beam



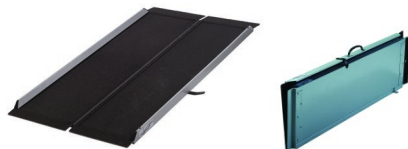
This is the smallest version within the Broadband ramps series and should be unfolded and placed in position with the non-slip rubber strip on the step or curb. Then the ramp is ready for use. After use the ramp should be folded and stored in the bag provided until required again.

Ray



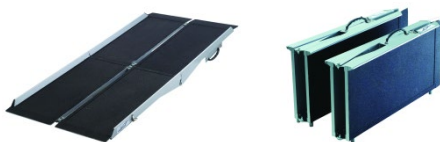
This ramp comprises two separate channel sections folded in half. Unfold them and place the correct distance apart to suit the wheel base of the scooter or the wheelchair with the ends that have the non-slip rubber strip placed on the step or the bumper of the vehicle. After use, the two channels can be folded in half and stowed away until required again (LHS picture here is not correct)

Spectrum



Unfold and place in position with the end that has the rubber non-slip on the step. Then the ramp is ready for use. After use the ramp can be folded again and stowed away until required again.

Defrag

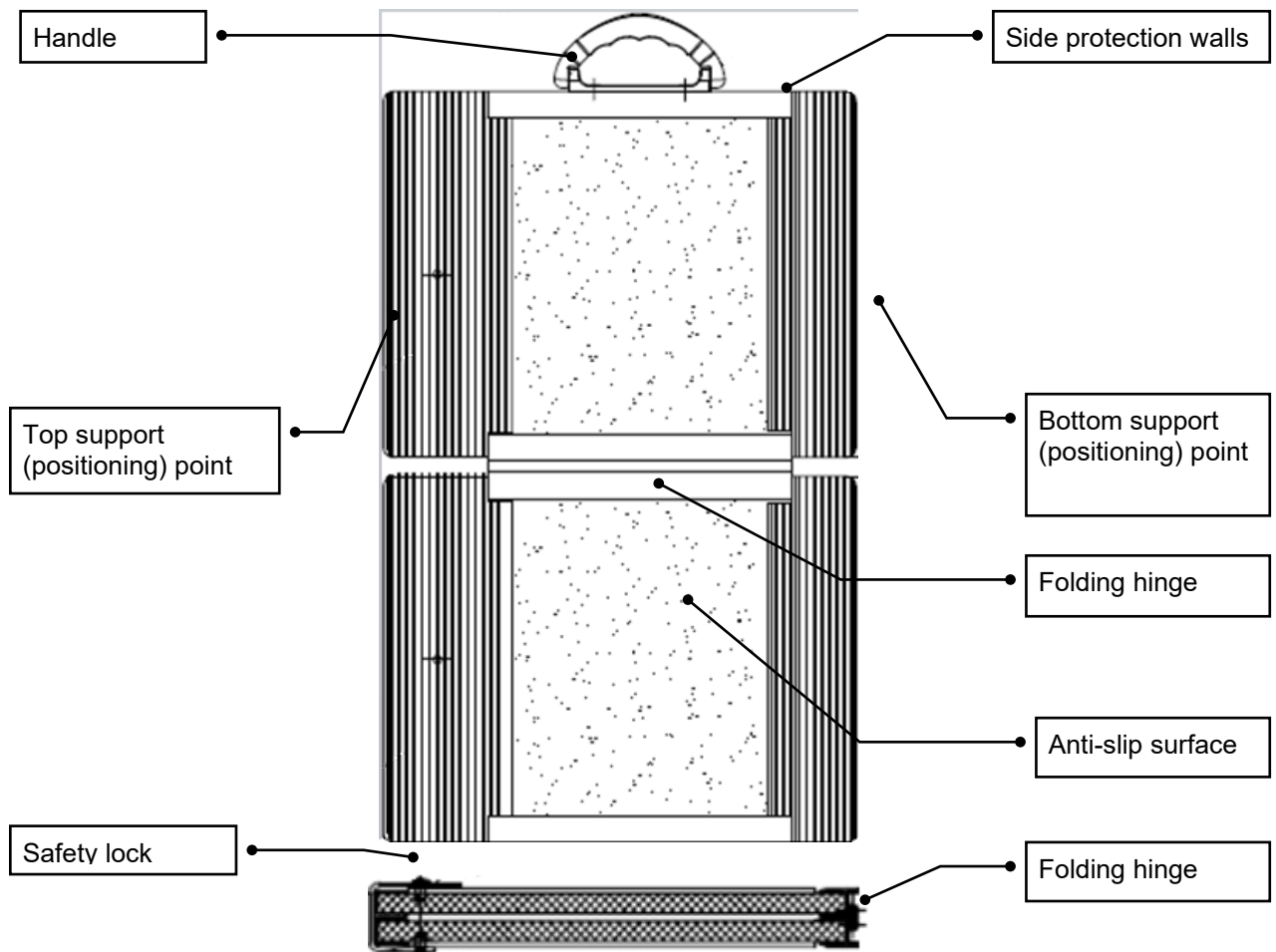


This type of ramp has two units that are unfolded and joined to the paired section by clicking together the join locks. either folded in half or have a fold at each end. not sure of this meaning.

Unfold them and connect the two halves and secure them with the fitted clip locks to form a flat surface. They can then be placed in position with the ends that have the non-slip rubber strips on the step or the bumper of the vehicle. The ramp is now ready for use. After use the two halves can be disconnected, folded and stowed away until required again.

5 Product Use

The picture presents an example of a ramp. Depending on the type of the device chosen, the look of the ramp may not be exactly the same as shown below, but all main features and instructions will remain the same. We recommend you to follow the steps below:



- To open the ramp, unlock the safety lock located on one side of the product and pull the ends of the ramp sideways to open it.
- The ramp has 2 support points.
- Top support must always be placed on the top of the obstacle to overcome.
- Bottom support must always be placed at the lowest point below the obstacle.
- The ramps must be placed on a stable surface.
- If your ramp consists of 2 separate rails, they must be always placed in parallel position and connected together.
- Check that the ramps are stable before driving on them.
- To close the ramp fold elements together like a book and use a safety lock to secure elements against unintended movements.

6 Transport description

Broadband ramps can be easily folded and locked for transport. Always ensure that the ramp during transportation is safely secured against unintended movements.

7 How to dispose of the product

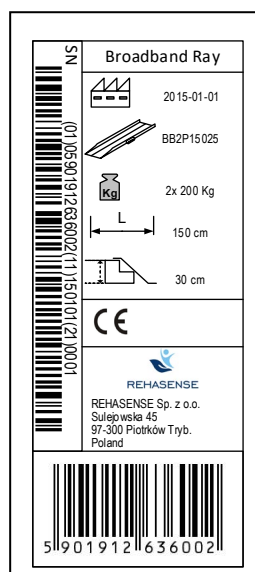
The device should not be deposited with normal garbage. It should be delivered to the disposal station for re-use or recycling.

8 Technical data

Name	Art.no.	Description	Dimensions opened: length x track-width (mm)	Dimensions: folded length x width x height (mm)	Weight (kg)	Max load (kg)	Max elevation (level difference) (cm) (step height)
"Broadband Beam"	BB1P04571	1 part ramp	450 x 710	450 x 376 x 80	4,1	300	9
"Broadband Ray"	BB2P15025	2 part ramp	1500 x 250 (2x)	784 x 280 x 174 (2x)	2 x 5.0	2 x 200	30
	BB2P18025	2 part ramp	1800x 250 (2x)	919 x 280 x 174 (2x)	2 x 5.7	2 x 200	36
	BB2P21025	2 part ramp	2100 x 250 (2x)	1084 x 280 x 174 (2x)	2 x 6.8	2 x 200	42
"Broadband Spectrum"	BB1P07076	1 part ramp	700 x 760	700 x 418 x 83	6,3	300	14
	BB1P09076	1 part ramp	900 x 760	900 x 418 x 83	7,6	300	18
	BB1P12076	1 part ramp	1200 x 760	1200 x 418 x 83	9,5	300	24
	BB1P15076	1 part ramp	1500 x 760	1500 x 418 x 83	11,5	300	30
"Broadband Defrag"	BB2P18038	2 part ramp	1800 x 380 (2x)	919 x 428 x 174 (2x)	2 x 7.1	2 x 150	36
	BB2P24038	2 part ramp	2400 x 380 (2x)	1250 x 428 x 174 (2x)	2 x 10.6	2 x 150	48
	BB2P30038	2 part ramp	3000 x 380 (2x)	1550 x 428 x 174 (2x)	2 x 12.4	2 x 150	60

9 Label

The product label is placed on each ramp.
This is an example only.
Exact look of the label depends on the chosen ramp type



10 Cleaning description

General:

- Regularly clean the device and keep it clean.
- Lighter dirt and dust can be removed with a wet cloth.
- Larger parts can be removed with a non-corroding, mild washing agent and water.
- Do not use harsh abrasives or bleach based cleaners, which may cause damage.
- Dry parts with a soft cloth.

11 Maintenance

Ramps are basically maintenance free, although it is recommended to check always before use if the anti-slip surface isn't dirty or torn. In case of any doubts concerning technical condition of your ramp stop using it and contact your dealer. Despite the solid construction and the use of resistant materials the product is subject to wear. It is therefore recommended to have the product checked by a professional at regular intervals.

- Check all nuts and bolts, clips & handles for tightness.
- Replace any broken, damaged or worn parts immediately.
- Brush any dirt or debris off the non-slip surface with a stiff brush
- Keep the painted surfaces clean by wiping with a damp cloth.

12 Warranty

The producer offers 2 years of guarantee for errors in production. The guarantee does not cover damages caused by use not-intended by manufacturer or by not respecting of this manual.

In case of technical problems please contact your dealer. You can also contact Rehasense directly.

Dealer:

Rehasense® Sp.z o.o.

Rehasense® Europe

Sulejowska 45

97-300 Piotrków Trybunalski

Polen

www.rehasense.com

info@rehasense.com